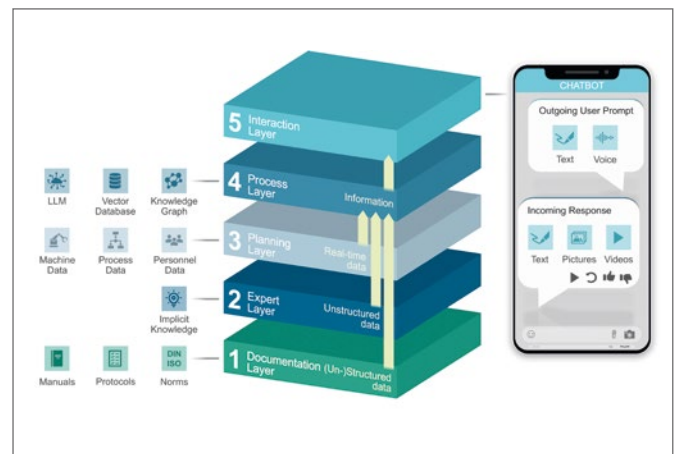
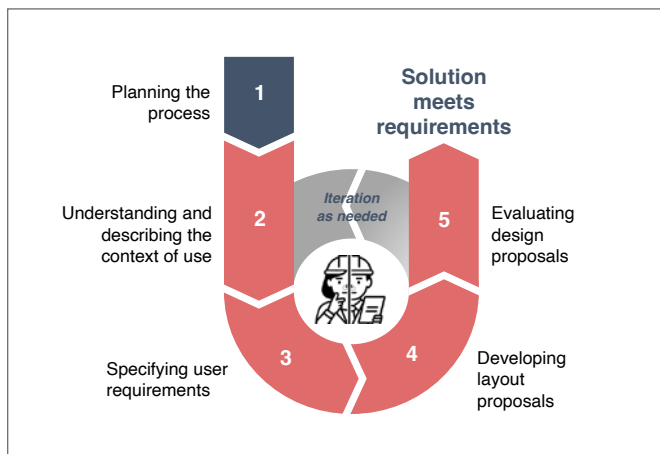


## Content



### AI-Supported Personnel Planning in Industrial Maintenance

Personnel deployment planning in industrial maintenance is a complex challenge, as dispatchers often have to match incomplete customer orders with the appropriate employee skills. An AI-based assistance system can help.

Continue reading on page 14

### Bridging Knowledge Gaps with GenAI in Industrial Maintenance

Maintenance in industrial companies presents the challenge of securing the implicit knowledge of experienced specialists while also meeting complex regulatory requirements. An assistance system based on generative AI could help close these gaps.

Continue reading on page 50

## HUMAN RESOURCES

**6** J. Lentes, C. Saba-Gayoso, M. Lück, K. Hölzle  
**Empathic Assembly Assistance**

**14** P. Hein, K. Simon, A. Kögel, T. Löffler, A. C. Bullinger-Hoffmann  
**AI-Supported Personnel Planning in Industrial Maintenance**

**22** J. Gonnermann-Müller, P. Wotschack, M. Krzywdzinsk, N. Gronau  
**Applied Knowledge and Augmented Reality**

**30** R. Eberle, M. Ebenbichler, B. Reimeir, L. Ralfs, R. Weidner  
**Biomechanical Simulation Pipeline for Exoskeletons**

## GENERATIVE AI

**38** K. Hölzle, U.-E. Haner  
**Human-Centered AI-Paired Work Systems**

**50** U. Wilkens, J. Polte, P. Lelidis, E. Uhlmann  
**Bridging Knowledge Gaps with GenAI in Industrial Maintenance**

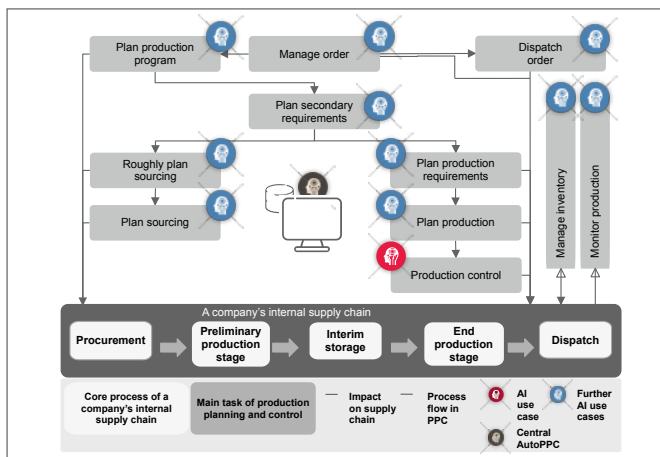
**58** N. Obermann, D. Lupp, U. Wilkens  
**Mechanisms of GenAI Governance**

## PRODUCTION

**64** S. Wenzel, F. Özkul, R. Sutherland  
**Assistance for Simulation in Production and Logistics**

**76** J. Sender, D. Jericho, K. Jagusch  
**Increased Productivity in Engineer-to-Order Production**

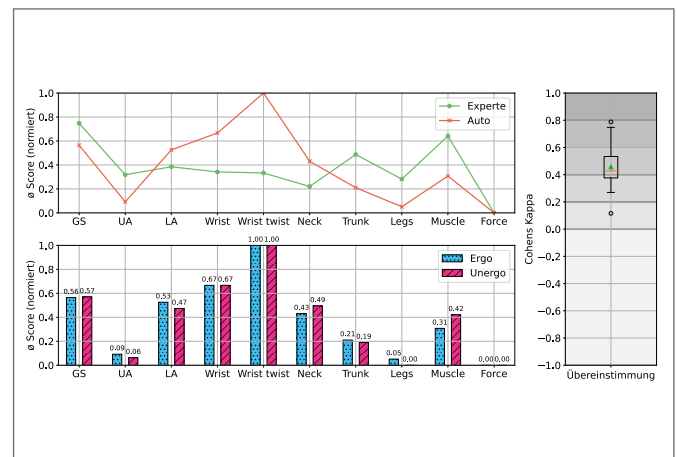
**84** J. Schneider, P. Nyhuis, M. Schmidt  
**Automation of Production Planning and Control**



### Automation of Production Planning and Control

In today's world, characterized by the spread of adaptable production methods, the integration of AI has opened up new perspectives. How can companies lay the foundation for intelligent, adaptive, and automated production control?

Continue reading on page 84



### Camera-Based Ergonomics Assessment

Targeted ergonomic design of workplaces and processes can counteract the challenges of manual assembly and improve working conditions. However, current expert ergonomics assessments are time-consuming and resource-intensive.

Continue reading on page 116

## SENSORS

- 92** S. Kreuter, P. Besinger, A. Lichtenberg, F. Ansari, W. Sihn  
**AI-based Recommender Systems in Product Development**
- 100** D. Kostolani, A. Ploss, S. Schlund  
**The Bias of "Instructional Systems for the Disabled"**
- 108** S. Pöttker, M. Neumann, M. Benter, C. Eckart, U. Wolf, P. Kuhlang, H. Lödging  
**Semi-Automated Derivation of MTM Analyses from Motion Capture Data**
- 116** J. Liebchen, B. Vur, M. Freitag  
**Camera-Based Ergonomics Assessment**

## AI APPLICATIONS

- 124** L. Venturoso, D. Steiner, S. Garbin, D. T. Matt  
**AI Smart Workstation for Industrial Quality Control**

- 130** M. Schmauder, G. Ott, M. Hahmann  
**Data-Driven Assistance Systems in the Working Environment**
- 138** S. Stowasser  
**Frameworks for the Structural Integration of Artificial Intelligence**
- 146** D. Arnold, F. Bülow, B. Kuhlenkötter  
**Reference Architecture for Machine Vision Demonstrators**

## SERVICE

- 3** Editorial
- 154** Preview of Industry 4.0 Science 6/2025
- 154** Imprint